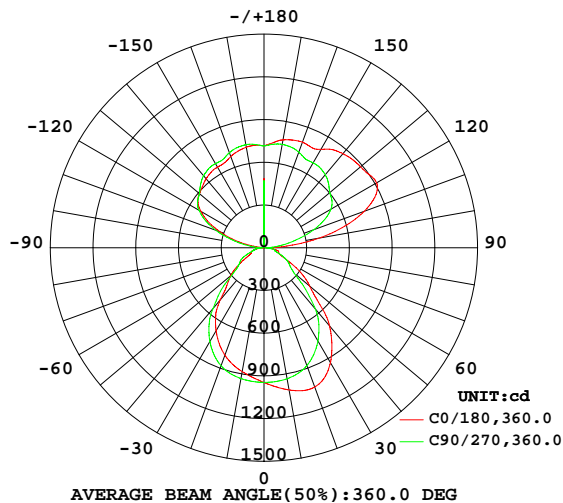


LUMINAIRE PHOTOMETRIC TEST REPORT

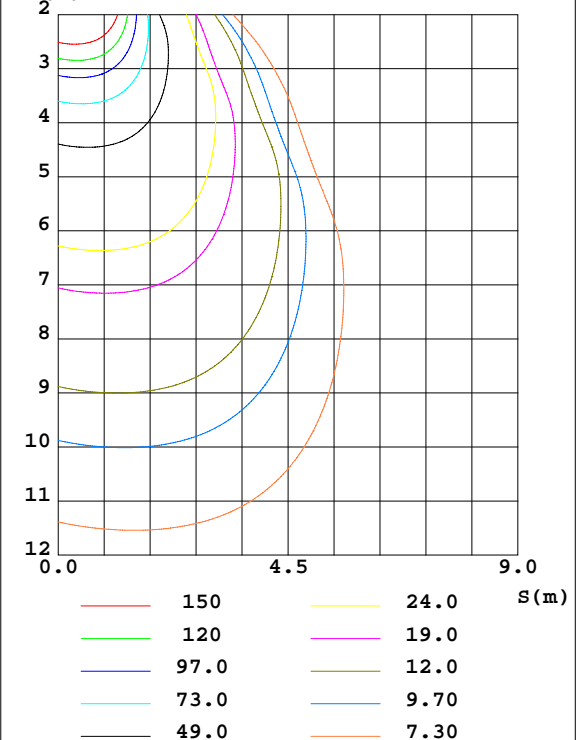
| | | |
|--|------------------|------------------|
| Test:U:229.71V I:0.1760A P:39.270W PF:0.9715 Freq:49.99Hz Lamp Flux:5056.02x1 lm | | |
| NAME: | TYPE: | WEIGHT: |
| SPEC.: | DIM.: 600*203*10 | SERIAL No.: |
| MFR.: | SUR.:0.58*0.122 | Shielding Angle: |

| DATA OF LAMP | | PHOTOMETRIC DATA Eff: 128.75 lm/W | | | |
|------------------|---------|-----------------------------------|-----------|------------------------|-----------|
| MODEL | | Imax(cd) | 1044 | S/MH(C0/180) | 1.09 |
| NOMINAL POWER(W) | 40 | LOR(%) | 100.0 | S/MH(C90/270) | 1.20 |
| RATED VOLTAGE(V) | 230.0 | TOTAL FLUX(lm) | 5056.0 | η UP,DN(C0-180) | 30.7,19.7 |
| NOMINAL FLUX(lm) | 5056.02 | CIE CLASS | SEMI-IND. | η UP,DN(C180-360) | 29.9,19.6 |
| LAMPS INSIDE | 1 | η up(%) | 60.7 | CIBSE SHR NOM | 1.25 |
| TEST VOLTAGE(V) | 230.0 | η down(%) | 39.3 | CIBSE SHR MAX | 1.25 |

LUMINOUS INTENSITY DISTRIBUTION DIAGRAM



C0 PLANE ISOLUX DIAGRAM (UNIT:lx)



C Range: 0 - 360DEG
C Interval: 5.0DEG
Test Speed: MEDIUM
Temperature:25.3DEG
Operators:
Test Date:2026-01-17

γ Range: 0 - 180DEG
 γ Interval: 0.5DEG
Test System:EVERFINE GO-2000_V1 SYSTEM V2.0.406.10
Humidity:65.0%
Test Distance:11.700m [K=0.8547]
Remarks:

ZONAL FLUX DIAGRAM

ZONAL FLUX DIAGRAM:

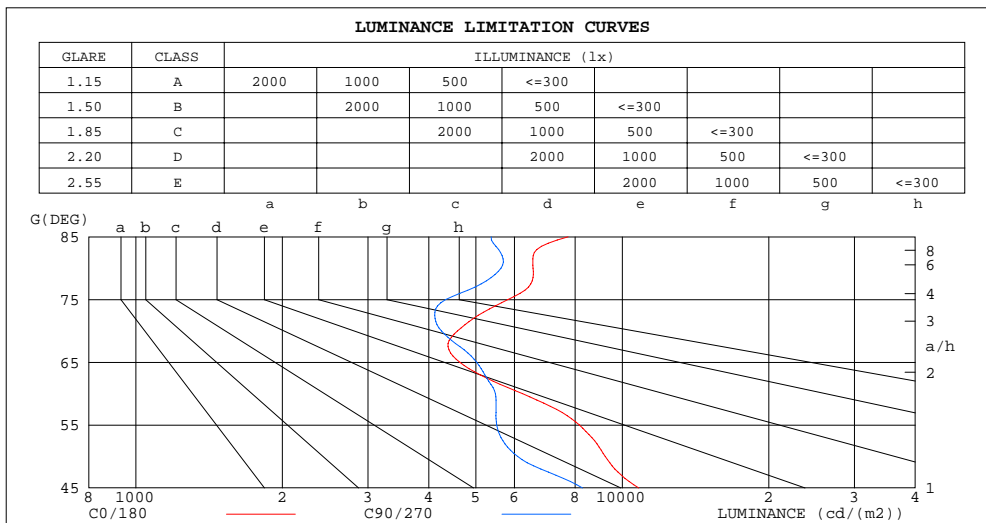
| γ | C0 | C45 | C90 | C135 | C180 | C225 | C270 | C315 | γ | Φ zone | Φ total | Φ lum, lamp |
|----------|-----------------------|-------|-------|-------|-------|-------|-------|-------|----------|-------------|--------------|------------------|
| 10 | 1014 | 970.4 | 934.2 | 900.7 | 883.3 | 899.8 | 932.8 | 969.4 | 0- 10 | 89.85 | 89.85 | 1.78,1.78 |
| 20 | 1041 | 950.7 | 880.9 | 827.0 | 803.1 | 827.8 | 882.1 | 951.6 | 10- 20 | 260.2 | 350.1 | 6.92,6.92 |
| 30 | 932.7 | 833.8 | 757.6 | 699.0 | 673.1 | 700.5 | 760.0 | 835.6 | 20- 30 | 386.7 | 736.8 | 14.6,14.6 |
| 40 | 716.9 | 630.6 | 562.5 | 507.3 | 481.0 | 503.9 | 557.1 | 626.5 | 30- 40 | 425.1 | 1162 | 23,23 |
| 50 | 419.3 | 326.8 | 277.0 | 283.7 | 305.7 | 289.5 | 286.3 | 333.8 | 40- 50 | 333.6 | 1496 | 29.6,29.6 |
| 60 | 220.7 | 209.3 | 194.0 | 168.7 | 152.0 | 168.7 | 193.9 | 209.2 | 50- 60 | 220.1 | 1716 | 33.9,33.9 |
| 70 | 110.9 | 106.9 | 102.8 | 97.02 | 94.58 | 103.5 | 113.2 | 114.7 | 60- 70 | 141.4 | 1857 | 36.7,36.7 |
| 80 | 80.54 | 75.02 | 69.19 | 61.61 | 56.59 | 59.44 | 65.72 | 72.42 | 70- 80 | 91.13 | 1948 | 38.5,38.5 |
| 90 | 16.35 | 10.56 | 6.160 | 2.779 | 1.564 | 4.368 | 8.703 | 12.46 | 80- 90 | 40.65 | 1989 | 39.3,39.3 |
| 100 | 391.9 | 252.4 | 158.1 | 113.7 | 104.5 | 109.5 | 151.3 | 247.4 | 90-100 | 89.97 | 2079 | 41.1,41.1 |
| 110 | 748.7 | 518.8 | 372.3 | 325.7 | 329.8 | 317.4 | 359.2 | 508.9 | 100-110 | 326.2 | 2405 | 47.6,47.6 |
| 120 | 913.0 | 685.5 | 542.6 | 502.7 | 511.0 | 492.6 | 526.5 | 673.4 | 110-120 | 520.1 | 2925 | 57.9,57.9 |
| 130 | 885.7 | 711.0 | 603.8 | 580.4 | 592.1 | 573.0 | 592.0 | 702.1 | 120-130 | 566.1 | 3491 | 69.1,69.1 |
| 140 | 862.8 | 746.8 | 669.8 | 637.4 | 632.7 | 631.4 | 660.0 | 739.5 | 130-140 | 521.7 | 4013 | 79.4,79.4 |
| 150 | 798.4 | 734.4 | 689.1 | 663.0 | 654.1 | 658.9 | 682.5 | 729.5 | 140-150 | 440.7 | 4454 | 88.1,88.1 |
| 160 | 789.2 | 746.7 | 714.7 | 692.1 | 682.3 | 689.6 | 710.7 | 743.7 | 150-160 | 324.9 | 4779 | 94.5,94.5 |
| 170 | 769.1 | 752.1 | 737.8 | 724.5 | 717.3 | 722.9 | 735.2 | 750.2 | 160-170 | 207.4 | 4986 | 98.6,98.6 |
| 180 | 716.0 | 716.0 | 716.0 | 716.0 | 716.0 | 716.0 | 716.0 | 716.0 | 170-180 | 69.97 | 5056 | 100,100 |
| DEG | LUMINOUS INTENSITY:cd | | | | | | | | | UNIT:lm | | |

C Range: 0 - 360DEG
 C Interval: 5.0DEG
 Test Speed: MEDIUM
 Temperature:25.3DEG
 Operators:
 Test Date:2026-01-17

γ Range: 0 - 180DEG
 γ Interval: 0.5DEG
 Test System:EVERFINE GO-2000_V1 SYSTEM V2.0.406.10
 Humidity:65.0%
 Test Distance:11.700m [K=0.8547]
 Remarks:

LUMINANCE LIMITATION CURVES

| | | |
|--|------------------|------------------|
| Test:U:229.71V I:0.1760A P:39.270W PF:0.9715 Freq:49.99Hz Lamp Flux:5056.02x1 lm | | |
| NAME: | TYPE: | WEIGHT: |
| SPEC.: | DIM.: 600*203*10 | SERIAL No.: |
| MFR.: | SUR.:0.58*0.122 | Shielding Angle: |



| LUMINANCE cd/(m2) | | |
|-------------------|--------|---------|
| G(DEG) | C0/180 | C90/270 |
| 85 | 7734 | 5375 |
| 80 | 6555 | 5631 |
| 75 | 5817 | 4331 |
| 70 | 4583 | 4248 |
| 65 | 4635 | 5018 |
| 60 | 6237 | 5484 |
| 55 | 8161 | 5519 |
| 50 | 9219 | 6091 |
| 45 | 10807 | 8280 |

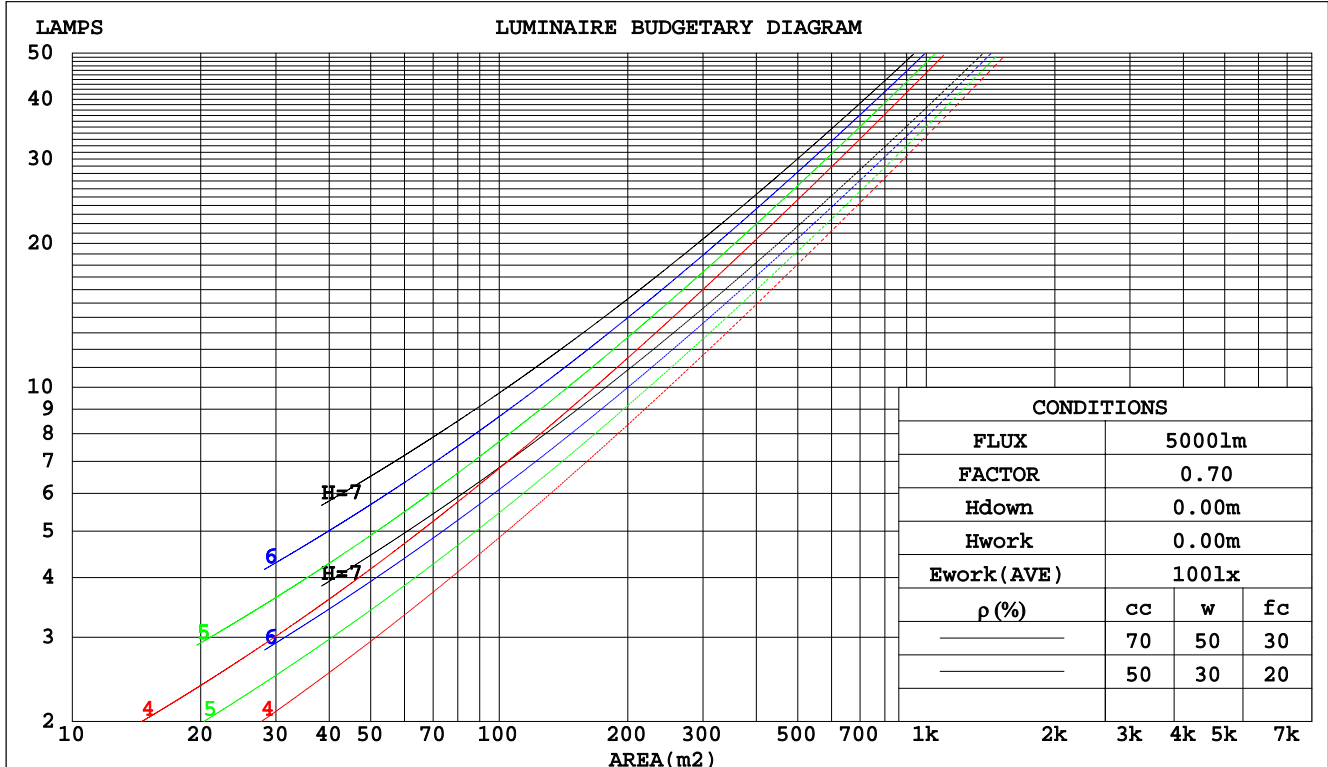
C Range: 0 - 360DEG
C Interval: 5.0DEG
Test Speed: MEDIUM
Temperature:25.3DEG
Operators:
Test Date:2026-01-17

γ Range: 0 - 180DEG
 γ Interval: 0.5DEG
Test System:EVERFINE GO-2000_V1 SYSTEM V2.0.406.10
Humidity:65.0%
Test Distance:11.700m [K=0.8547]
Remarks:

CU AND LUMINAIRE BUDGETARY ESTIMATE DIAGRAM

| | | |
|--|------------------|------------------|
| Test:U:229.71V I:0.1760A P:39.270W PF:0.9715 Freq:49.99Hz Lamp Flux:5056.02x1 lm | | |
| NAME: | TYPE: | WEIGHT: |
| SPEC.: | DIM.: 600*203*10 | SERIAL No.: |
| MFR.: | SUR.:0.58*0.122 | Shielding Angle: |

| pcc | 80% | | | 70% | | | 50% | | | 30% | | | 10% | | | 0 |
|------|-----------------------|------|------|---------------------------------|-----|-----|-----|-----|-----|-----|-----|-----|-----|-----|-----|-----|
| pw | 50% | 30% | 10% | 50% | 30% | 10% | 50% | 30% | 10% | 50% | 30% | 10% | 50% | 30% | 10% | 0 |
| pfc | 20% | | | 20% | | | 20% | | | 20% | | | 20% | | | 0 |
| RCR | RCR:Room Cavity Ratio | | | Coefficients of Utilization(CU) | | | | | | | | | | | | |
| 0.0 | 1.05 | 1.05 | 1.05 | .95 | .95 | .95 | .77 | .77 | .77 | .61 | .61 | .61 | .46 | .46 | .46 | .39 |
| 1.0 | .92 | .88 | .85 | .84 | .80 | .78 | .68 | .66 | .64 | .54 | .53 | .52 | .42 | .41 | .40 | .34 |
| 2.0 | .81 | .75 | .70 | .74 | .69 | .65 | .61 | .57 | .54 | .48 | .46 | .44 | .37 | .36 | .34 | .29 |
| 3.0 | .71 | .64 | .59 | .65 | .59 | .55 | .54 | .50 | .46 | .43 | .40 | .38 | .34 | .32 | .30 | .26 |
| 4.0 | .64 | .56 | .50 | .58 | .52 | .47 | .48 | .44 | .40 | .39 | .36 | .33 | .30 | .28 | .26 | .22 |
| 5.0 | .57 | .49 | .44 | .52 | .46 | .41 | .43 | .38 | .35 | .35 | .32 | .29 | .28 | .25 | .23 | .20 |
| 6.0 | .51 | .43 | .38 | .47 | .40 | .35 | .39 | .34 | .30 | .32 | .28 | .26 | .25 | .23 | .21 | .18 |
| 7.0 | .46 | .39 | .33 | .43 | .36 | .31 | .36 | .31 | .27 | .29 | .26 | .23 | .23 | .21 | .19 | .16 |
| 8.0 | .42 | .35 | .30 | .39 | .32 | .28 | .33 | .28 | .24 | .27 | .23 | .20 | .21 | .19 | .17 | .14 |
| 9.0 | .39 | .31 | .27 | .36 | .29 | .25 | .30 | .25 | .22 | .25 | .21 | .19 | .20 | .17 | .15 | .13 |
| 10.0 | .35 | .28 | .24 | .33 | .27 | .22 | .28 | .23 | .20 | .23 | .19 | .17 | .18 | .16 | .14 | .12 |



C Range: 0 - 360DEG
C Interval: 5.0DEG
Test Speed: MEDIUM
Temperature:25.3DEG
Operators:
Test Date:2026-01-17

γ Range: 0 - 180DEG
γ Interval: 0.5DEG
Test System:EVERFINE GO-2000_V1 SYSTEM V2.0.406.10
Humidity:65.0%
Test Distance:11.700m [K=0.8547]
Remarks:

WEC AND CCEC

| | | | | | | | | |
|--|--|--|------------------|--|--|------------------|--|--|
| Test:U:229.71V I:0.1760A P:39.270W PF:0.9715 Freq:49.99Hz Lamp Flux:5056.02x1 lm | | | | | | | | |
| NAME: | | | TYPE: | | | WEIGHT: | | |
| SPEC.: | | | DIM.: 600*203*10 | | | SERIAL No.: | | |
| MFR.: | | | SUR.:0.58*0.122 | | | Shielding Angle: | | |

| pcc | 80% | | | 70% | | | 50% | | | 30% | | | 10% | | | 0 |
|------|-----------------------|------|------|------|------|------|---------------------------------|------|------|------|------|------|------|------|------|---|
| pw | 50% | 30% | 10% | 50% | 30% | 10% | 50% | 30% | 10% | 50% | 30% | 10% | 50% | 30% | 10% | 0 |
| pfc | 20% | | | 20% | | | 20% | | | 20% | | | 20% | | | 0 |
| RCR | RCR:Room Cavity Ratio | | | | | | Wall Exitance Coefficients(WEC) | | | | | | | | | |
| 0.0 | | | | | | | | | | | | | | | | |
| 1.0 | .264 | .150 | .048 | .239 | .136 | .043 | .192 | .110 | .035 | .148 | .086 | .027 | .108 | .063 | .020 | |
| 2.0 | .245 | .134 | .041 | .222 | .122 | .038 | .179 | .099 | .031 | .139 | .078 | .024 | .102 | .058 | .018 | |
| 3.0 | .227 | .121 | .036 | .206 | .110 | .033 | .166 | .090 | .027 | .130 | .071 | .022 | .096 | .053 | .016 | |
| 4.0 | .210 | .109 | .032 | .191 | .100 | .030 | .155 | .082 | .025 | .121 | .065 | .020 | .090 | .049 | .015 | |
| 5.0 | .196 | .100 | .029 | .178 | .091 | .027 | .144 | .075 | .022 | .113 | .060 | .018 | .084 | .045 | .014 | |
| 6.0 | .183 | .092 | .026 | .166 | .084 | .024 | .135 | .069 | .020 | .106 | .055 | .016 | .079 | .042 | .012 | |
| 7.0 | .171 | .085 | .024 | .156 | .078 | .022 | .127 | .064 | .018 | .100 | .051 | .015 | .075 | .039 | .011 | |
| 8.0 | .160 | .078 | .022 | .146 | .072 | .020 | .120 | .060 | .017 | .094 | .048 | .014 | .071 | .036 | .011 | |
| 9.0 | .151 | .073 | .020 | .138 | .067 | .019 | .113 | .056 | .016 | .089 | .045 | .013 | .067 | .034 | .010 | |
| 10.0 | .143 | .068 | .019 | .130 | .063 | .018 | .107 | .052 | .015 | .084 | .042 | .012 | .063 | .032 | .009 | |

| pcc | 80% | | | 70% | | | 50% | | | 30% | | | 10% | | | 0 |
|------|-----------------------|------|------|------|------|------|--|------|------|------|------|------|------|------|------|---|
| pw | 50% | 30% | 10% | 50% | 30% | 10% | 50% | 30% | 10% | 50% | 30% | 10% | 50% | 30% | 10% | 0 |
| pfc | 20% | | | 20% | | | 20% | | | 20% | | | 20% | | | 0 |
| RCR | RCR:Room Cavity Ratio | | | | | | Ceiling Cavity Exitance Coefficients(CCEC) | | | | | | | | | |
| 0.0 | .653 | .653 | .653 | .558 | .558 | .558 | .381 | .381 | .381 | .219 | .219 | .219 | .070 | .070 | .070 | |
| 1.0 | .643 | .623 | .604 | .550 | .534 | .520 | .376 | .368 | .360 | .217 | .213 | .209 | .069 | .068 | .068 | |
| 2.0 | .635 | .601 | .573 | .544 | .518 | .495 | .373 | .358 | .345 | .215 | .208 | .202 | .069 | .067 | .066 | |
| 3.0 | .628 | .586 | .552 | .538 | .505 | .479 | .370 | .351 | .336 | .213 | .205 | .198 | .069 | .067 | .065 | |
| 4.0 | .621 | .574 | .538 | .533 | .496 | .467 | .366 | .346 | .329 | .212 | .202 | .195 | .068 | .066 | .064 | |
| 5.0 | .615 | .565 | .528 | .528 | .489 | .459 | .364 | .341 | .324 | .211 | .200 | .192 | .068 | .065 | .063 | |
| 6.0 | .609 | .557 | .520 | .523 | .483 | .453 | .361 | .338 | .321 | .209 | .199 | .191 | .068 | .065 | .063 | |
| 7.0 | .603 | .551 | .515 | .519 | .478 | .449 | .358 | .335 | .318 | .208 | .197 | .189 | .067 | .065 | .063 | |
| 8.0 | .598 | .546 | .511 | .514 | .474 | .445 | .356 | .333 | .316 | .207 | .196 | .188 | .067 | .064 | .062 | |
| 9.0 | .592 | .542 | .508 | .510 | .470 | .443 | .354 | .331 | .314 | .206 | .195 | .188 | .067 | .064 | .062 | |
| 10.0 | .588 | .538 | .505 | .507 | .467 | .441 | .351 | .329 | .313 | .205 | .194 | .187 | .066 | .064 | .062 | |

C Range: 0 - 360DEG
C Interval: 5.0DEG
Test Speed: MEDIUM
Temperature:25.3DEG
Operators:
Test Date:2026-01-17

γ Range: 0 - 180DEG
γ Interval: 0.5DEG
Test System:EVERFINE GO-2000_V1 SYSTEM V2.0.406.10
Humidity:65.0%
Test Distance:11.700m [K=0.8547]
Remarks:

UGR(Unified Glare Rating) Table

| | | | | | | | | | | |
|--|------------------|------|------------------|------|------|------------------|------|------|------|------|
| Test:U:229.71V I:0.1760A P:39.270W PF:0.9715 Freq:49.99Hz Lamp Flux:5056.02x1 lm | | | | | | | | | | |
| NAME: | | | TYPE: | | | WEIGHT: | | | | |
| SPEC.: | | | DIM.: 600*203*10 | | | SERIAL No.: | | | | |
| MFR.: | | | SUR.:0.58*0.122 | | | Shielding Angle: | | | | |
| ceiling/cavity | 0.7 | 0.7 | 0.5 | 0.5 | 0.3 | 0.7 | 0.7 | 0.5 | 0.5 | 0.3 |
| walls | 0.5 | 0.3 | 0.5 | 0.3 | 0.3 | 0.5 | 0.3 | 0.5 | 0.3 | 0.3 |
| working plane | 0.2 | 0.2 | 0.2 | 0.2 | 0.2 | 0.2 | 0.2 | 0.2 | 0.2 | 0.2 |
| Room dimensions | Viewed crosswise | | | | | Viewed endwise | | | | |
| x = 2H y = 2H | 15.2 | 16.0 | 16.1 | 17.0 | 18.2 | 14.2 | 15.0 | 15.2 | 16.0 | 17.2 |
| 3H | 15.7 | 16.5 | 16.7 | 17.4 | 18.7 | 15.0 | 15.7 | 16.0 | 16.7 | 18.0 |
| 4H | 16.2 | 16.9 | 17.2 | 17.9 | 19.2 | 15.3 | 16.0 | 16.3 | 17.0 | 18.3 |
| 6H | 16.8 | 17.4 | 17.8 | 18.4 | 19.8 | 15.9 | 16.5 | 16.9 | 17.5 | 18.8 |
| 8H | 17.1 | 17.7 | 18.1 | 18.7 | 20.0 | 16.1 | 16.7 | 17.1 | 17.7 | 19.1 |
| 12H | 17.3 | 17.8 | 18.3 | 18.8 | 20.2 | 16.3 | 16.8 | 17.3 | 17.8 | 19.2 |
| 4H 2H | 15.2 | 15.9 | 16.2 | 16.9 | 18.2 | 14.4 | 15.1 | 15.4 | 16.1 | 17.4 |
| 3H | 15.9 | 16.5 | 17.0 | 17.5 | 18.9 | 15.3 | 15.9 | 16.4 | 16.9 | 18.3 |
| 4H | 16.6 | 17.1 | 17.6 | 18.1 | 19.5 | 15.8 | 16.3 | 16.9 | 17.4 | 18.7 |
| 6H | 17.4 | 17.9 | 18.5 | 18.9 | 20.3 | 16.6 | 17.0 | 17.7 | 18.1 | 19.5 |
| 8H | 17.7 | 18.2 | 18.8 | 19.2 | 20.6 | 16.9 | 17.3 | 18.0 | 18.4 | 19.8 |
| 12H | 18.0 | 18.4 | 19.1 | 19.5 | 20.9 | 17.1 | 17.5 | 18.2 | 18.6 | 20.0 |
| 8H 4H | 16.7 | 17.1 | 17.8 | 18.1 | 19.6 | 16.0 | 16.4 | 17.1 | 17.5 | 18.9 |
| 6H | 17.7 | 18.1 | 18.8 | 19.1 | 20.6 | 17.0 | 17.4 | 18.1 | 18.4 | 19.9 |
| 8H | 18.2 | 18.5 | 19.3 | 19.6 | 21.0 | 17.5 | 17.8 | 18.6 | 18.8 | 20.3 |
| 12H | 18.6 | 18.9 | 19.7 | 20.0 | 21.4 | 17.8 | 18.0 | 18.9 | 19.1 | 20.6 |
| 12H 4H | 16.7 | 17.0 | 17.7 | 18.1 | 19.5 | 16.0 | 16.4 | 17.1 | 17.5 | 18.9 |
| 6H | 17.8 | 18.1 | 18.9 | 19.2 | 20.6 | 17.1 | 17.4 | 18.2 | 18.5 | 19.9 |
| 8H | 18.3 | 18.5 | 19.4 | 19.6 | 21.1 | 17.6 | 17.9 | 18.7 | 19.0 | 20.4 |
| Variations with the observer position at spacings: | | | | | | | | | | |
| S = 1.0H | + 0.3 / - 0.3 | | | | | + 0.4 / - 0.4 | | | | |
| 1.5H | + 0.2 / - 0.3 | | | | | + 0.3 / - 0.4 | | | | |
| 2.0H | + 0.6 / - 0.5 | | | | | + 0.4 / - 0.3 | | | | |

CIE Pub.117, 5056 lm Total Lamp Luminous Flux Corrected ($8\log(F/F_0) = 5.6$)

C Range: 0 - 360DEG
C Interval: 5.0DEG
Test Speed: MEDIUM
Temperature:25.3DEG
Operators:
Test Date:2026-01-17

γ Range: 0 - 180DEG
 γ Interval: 0.5DEG
Test System:EVERFINE GO-2000_V1 SYSTEM V2.0.406.10
Humidity:65.0%
Test Distance:11.700m [K=0.8547]
Remarks:

UTILIZATION FACTORS TABLE

| | | |
|--|------------------|------------------|
| Test:U:229.71V I:0.1760A P:39.270W PF:0.9715 Freq:49.99Hz Lamp Flux:5056.02x1 lm | | |
| NAME: | TYPE: | WEIGHT: |
| SPEC.: | DIM.: 600*203*10 | SERIAL No.: |
| MFR.: | SUR.:0.58*0.122 | Shielding Angle: |

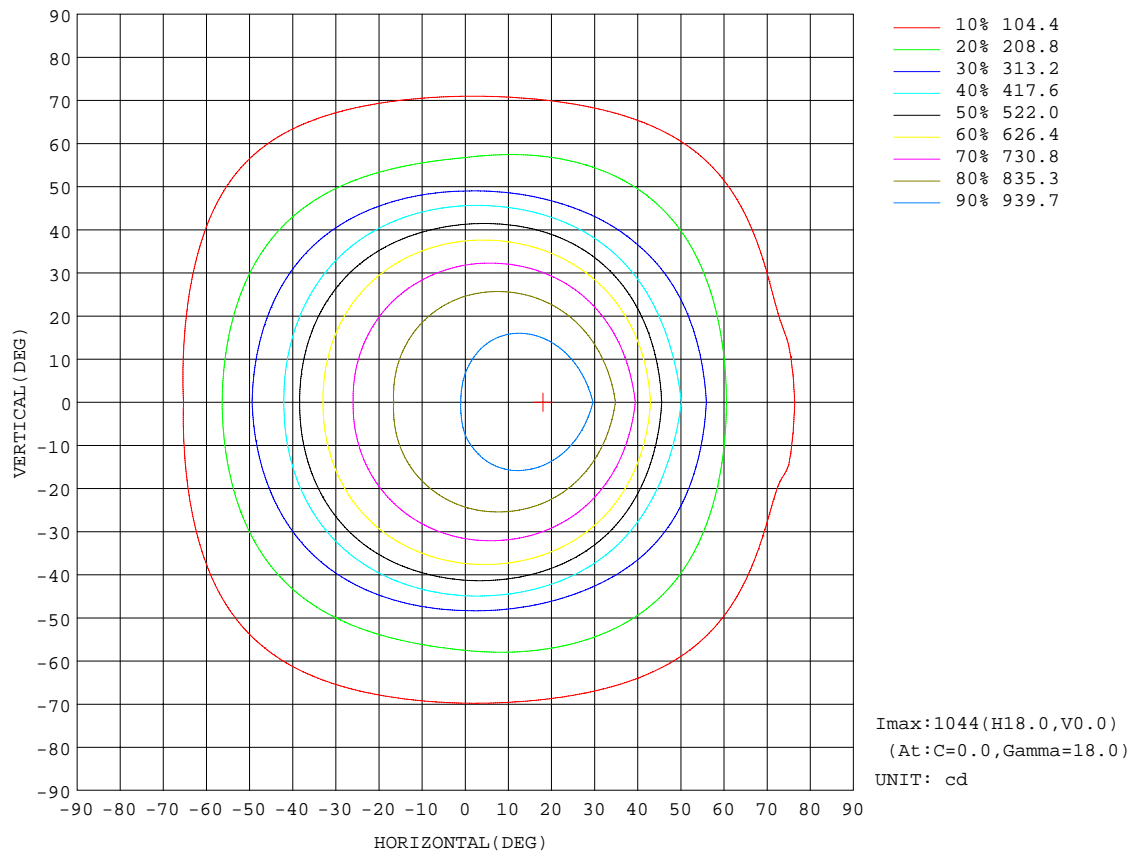
| REFLECTANCE | | | | | | | | | | |
|----------------------------------|---|-----|-----------|-----|-----|-----|-----|---------------|-----|--------|
| Ceiling | 0.8 | 0.8 | 0.8 | 0.7 | 0.7 | 0.7 | 0.5 | 0.5 | 0.5 | 0 |
| Walls | 0.7 | 0.5 | 0.3 | 0.7 | 0.5 | 0.3 | 0.7 | 0.5 | 0.3 | 0 |
| Working plane | 0.2 | 0.2 | 0.2 | 0.2 | 0.2 | 0.2 | 0.2 | 0.2 | 0.2 | 0 |
| ROOM INDEX | UTILIZATION FACTORS(PERCENT) $k(RI) \times RCR = 5$ | | | | | | | | | |
| $k = 0.60$ | 44 | 33 | 27 | 41 | 32 | 26 | 36 | 29 | 24 | 17 |
| 0.80 | 53 | 42 | 35 | 49 | 40 | 34 | 43 | 35 | 31 | 21 |
| 1.00 | 60 | 49 | 42 | 56 | 46 | 40 | 48 | 41 | 36 | 24 |
| 1.25 | 67 | 56 | 49 | 62 | 53 | 46 | 53 | 46 | 41 | 26 |
| 1.50 | 72 | 62 | 54 | 66 | 57 | 51 | 56 | 49 | 45 | 28 |
| 2.00 | 79 | 69 | 63 | 72 | 64 | 58 | 60 | 55 | 50 | 30 |
| 2.50 | 83 | 75 | 68 | 76 | 69 | 63 | 63 | 58 | 54 | 32 |
| 3.00 | 86 | 79 | 73 | 79 | 72 | 67 | 65 | 61 | 57 | 33 |
| 4.00 | 90 | 84 | 79 | 82 | 77 | 73 | 68 | 64 | 61 | 34 |
| 5.00 | 93 | 88 | 83 | 85 | 80 | 76 | 70 | 67 | 64 | 35 |
| ROOM INDEX | UF(total) | | | | | | | | | Direct |
| According to DIN EN 13032-2 2004 | | | Suspended | | | | | SHRNOM = 1.25 | | |

C Range: 0 - 360DEG
C Interval: 5.0DEG
Test Speed: MEDIUM
Temperature:25.3DEG
Operators:
Test Date:2026-01-17

γ Range: 0 - 180DEG
 γ Interval: 0.5DEG
Test System:EVERFINE GO-2000_V1 SYSTEM V2.0.406.10
Humidity:65.0%
Test Distance:11.700m [K=0.8547]
Remarks:

ISOCANDELA DIAGRAM

| | | |
|--|------------------|------------------|
| Test:U:229.71V I:0.1760A P:39.270W PF:0.9715 Freq:49.99Hz Lamp Flux:5056.02x1 lm | | |
| NAME: | TYPE: | WEIGHT: |
| SPEC.: | DIM.: 600*203*10 | SERIAL No.: |
| MFR.: | SUR.:0.58*0.122 | Shielding Angle: |

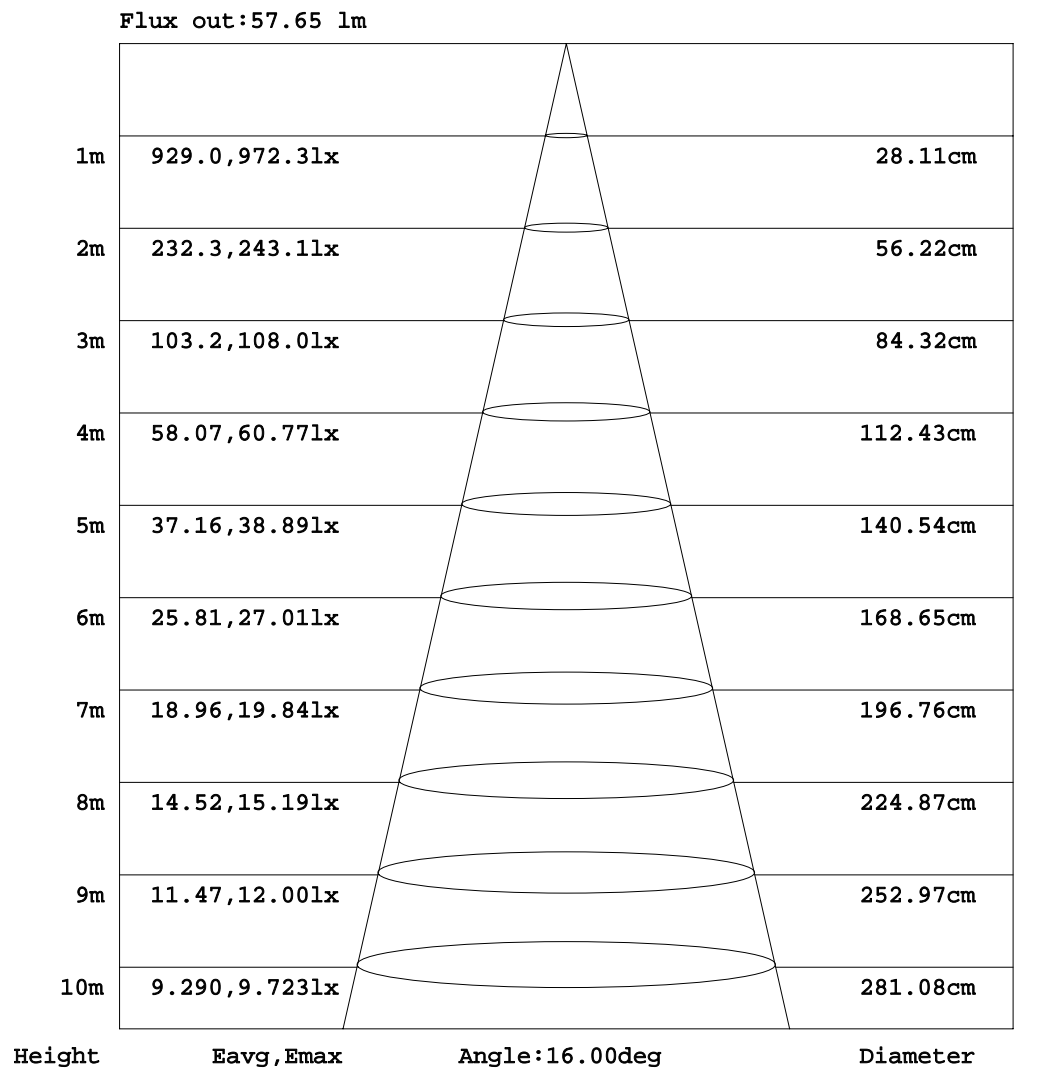


C Range: 0 - 360DEG
C Interval: 5.0DEG
Test Speed: MEDIUM
Temperature:25.3DEG
Operators:
Test Date:2026-01-17

γ Range: 0 - 180DEG
 γ Interval: 0.5DEG
Test System:EVERFINE GO-2000_V1 SYSTEM V2.0.406.10
Humidity:65.0%
Test Distance:11.700m [K=0.8547]
Remarks:

AAI Figure

| | | |
|--|------------------|------------------|
| Test:U:229.71V I:0.1760A P:39.270W PF:0.9715 Freq:49.99Hz Lamp Flux:5056.02x1 lm | | |
| NAME: | TYPE: | WEIGHT: |
| SPEC.: | DIM.: 600*203*10 | SERIAL No.: |
| MFR.: | SUR.:0.58*0.122 | Shielding Angle: |



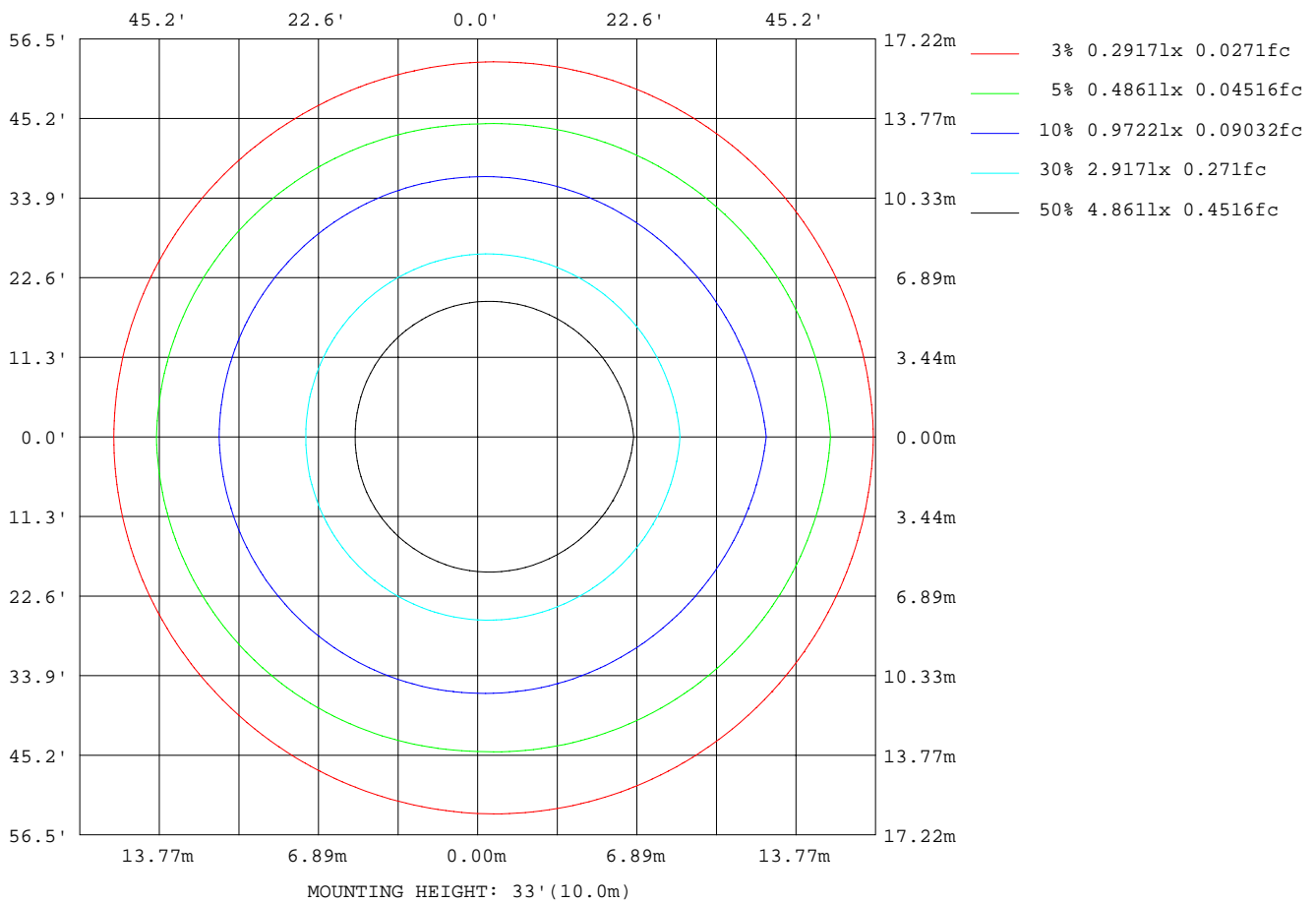
Note:The Curves indicate the illuminated area and the average illumination when the luminaire is at different distance.

C Range: 0 - 360DEG
 C Interval: 5.0DEG
 Test Speed: MEDIUM
 Temperature:25.3DEG
 Operators:
 Test Date:2026-01-17

γ Range: 0 - 180DEG
 γ Interval: 0.5DEG
 Test System:EVERFINE GO-2000_V1 SYSTEM V2.0.406.10
 Humidity:65.0%
 Test Distance:11.700m [K=0.8547]
 Remarks:

ISOLUX DIAGRAM

| | | |
|--|------------------|------------------|
| Test:U:229.71V I:0.1760A P:39.270W PF:0.9715 Freq:49.99Hz Lamp Flux:5056.02x1 lm | | |
| NAME: | TYPE: | WEIGHT: |
| SPEC.: | DIM.: 600*203*10 | SERIAL No.: |
| MFR.: | SUR.:0.58*0.122 | Shielding Angle: |



C Range: 0 - 360DEG
C Interval: 5.0DEG
Test Speed: MEDIUM
Temperature: 25.3DEG
Operators:
Test Date: 2026-01-17

γ Range: 0 - 180DEG
 γ Interval: 0.5DEG
Test System: EVERFINE GO-2000_V1 SYSTEM V2.0.406.10
Humidity: 65.0%
Test Distance: 11.700m [K=0.8547]
Remarks:

LED Avg.L Report

| | | |
|--|------------------|------------------|
| Test:U:229.71V I:0.1760A P:39.270W PF:0.9715 Freq:49.99Hz Lamp Flux:5056.02x1 lm | | |
| NAME: | TYPE: | WEIGHT: |
| SPEC.: | DIM.: 600*203*10 | SERIAL No.: |
| MFR.: | SUR.:0.58*0.122 | Shielding Angle: |

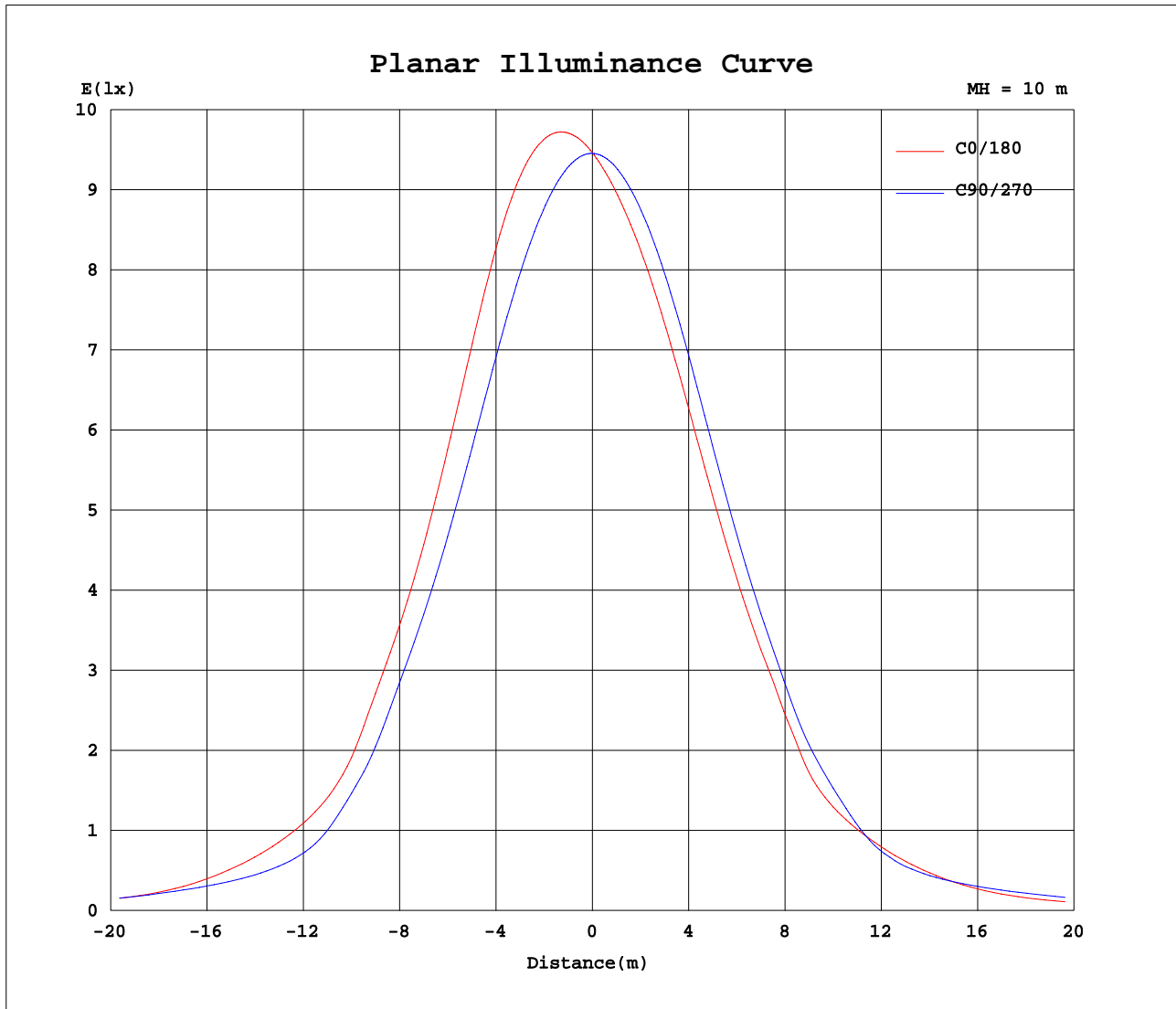
| AvgL | cd/m2 |
|----------------|-------|
| L_0~180(65)av | 4088 |
| L_0~180(75)av | 5266 |
| L_0~180(85)av | 6399 |
| L_90~270(65)av | 5209 |
| L_90~270(75)av | 4288 |
| L_90~270(85)av | 5794 |
| L_45(65)av | 4755 |
| L_45(75)av | 4620 |
| L_45(85)av | 5938 |

Standard: GB/T 29293-2012

C Range: 0 - 360DEG
C Interval: 5.0DEG
Test Speed: MEDIUM
Temperature:25.3DEG
Operators:
Test Date:2026-01-17

γ Range: 0 - 180DEG
 γ Interval: 0.5DEG
Test System:EVERFINE GO-2000_V1 SYSTEM V2.0.406.10
Humidity:65.0%
Test Distance:11.700m [K=0.8547]
Remarks:

Planar Illuminance Curve



C Range: 0 - 360DEG
C Interval: 5.0DEG
Test Speed: MEDIUM
Temperature: 25.3DEG
Operators:
Test Date: 2026-01-17

γ Range: 0 - 180DEG
 γ Interval: 0.5DEG
Test System: EVERFINE GO-2000_V1 SYSTEM V2.0.406.10
Humidity: 65.0%
Test Distance: 11.700m [K=0.8547]
Remarks:

LUMINOUS DISTRIBUTION INTENSITY DATA

| | | |
|--|------------------|------------------|
| Test:U:229.71V I:0.1760A P:39.270W PF:0.9715 Freq:49.99Hz Lamp Flux:5056.02x1 lm | | |
| NAME: | TYPE: | WEIGHT: |
| SPEC.: | DIM.: 600*203*10 | SERIAL No.: |
| MFR.: | SUR.:0.58*0.122 | Shielding Angle: |

Table--1

UNIT: cd

| C(DEG) γ (DEG) | 0 | 5 | 10 | 15 | 20 | 25 | 30 | 35 | 40 | 45 | 50 | 55 | 60 | 65 | 70 | 75 | 80 | 85 | 90 |
|-------------------|------|------|------|------|------|------|------|------|------|------|-------|------|------|------|------|------|------|------|------|
| 0 | 946 | 946 | 946 | 946 | 946 | 946 | 946 | 946 | 946 | 946 | 946 | 946 | 946 | 946 | 946 | 946 | 946 | 946 | 946 |
| 5 | 981 | 978 | 976 | 974 | 972 | 969 | 967 | 965 | 963 | 961 | 959 | 957 | 955 | 953 | 951 | 949 | 947 | 945 | 943 |
| 10 | 1014 | 1009 | 1004 | 999 | 994 | 989 | 984 | 979 | 975 | 970 | 966 | 962 | 958 | 953 | 949 | 945 | 942 | 938 | 934 |
| 15 | 1039 | 1031 | 1022 | 1014 | 1006 | 999 | 991 | 984 | 977 | 970 | 963 | 957 | 950 | 944 | 938 | 932 | 926 | 921 | 915 |
| 20 | 1041 | 1030 | 1019 | 1009 | 998 | 988 | 979 | 969 | 960 | 951 | 942 | 933 | 925 | 917 | 909 | 902 | 895 | 888 | 881 |
| 25 | 1006 | 994 | 982 | 970 | 958 | 947 | 936 | 925 | 915 | 905 | 895 | 886 | 876 | 868 | 859 | 851 | 843 | 835 | 827 |
| 30 | 933 | 921 | 909 | 897 | 886 | 875 | 864 | 854 | 844 | 834 | 824 | 815 | 806 | 797 | 789 | 780 | 773 | 765 | 758 |
| 35 | 831 | 820 | 810 | 800 | 789 | 780 | 770 | 761 | 751 | 742 | 734 | 725 | 717 | 709 | 702 | 694 | 687 | 680 | 673 |
| 40 | 717 | 706 | 696 | 686 | 676 | 667 | 657 | 648 | 639 | 631 | 622 | 614 | 606 | 598 | 590 | 583 | 576 | 569 | 562 |
| 45 | 541 | 532 | 523 | 514 | 506 | 498 | 490 | 482 | 475 | 468 | 461 | 454 | 448 | 442 | 436 | 430 | 424 | 419 | 414 |
| 50 | 419 | 407 | 395 | 384 | 373 | 363 | 353 | 344 | 335 | 327 | 319 | 312 | 305 | 299 | 294 | 289 | 284 | 280 | 277 |
| 55 | 331 | 322 | 314 | 305 | 297 | 290 | 283 | 276 | 269 | 263 | 257 | 252 | 247 | 242 | 238 | 234 | 230 | 227 | 224 |
| 60 | 221 | 220 | 218 | 217 | 216 | 215 | 213 | 212 | 211 | 209 | 208 | 206 | 205 | 203 | 201 | 200 | 198 | 196 | 194 |
| 65 | 139 | 141 | 143 | 144 | 146 | 147 | 149 | 150 | 151 | 151 | 152 | 152 | 152 | 152 | 152 | 152 | 152 | 151 | 150 |
| 70 | 111 | 110 | 110 | 110 | 109 | 109 | 108 | 108 | 107 | 107 | 106 | 106 | 106 | 105 | 105 | 104 | 104 | 103 | 103 |
| 75 | 107 | 104 | 102 | 99.6 | 97.5 | 95.5 | 93.7 | 91.9 | 90.2 | 88.6 | 87.2 | 85.8 | 84.6 | 83.4 | 82.4 | 81.5 | 80.7 | 79.9 | 79.3 |
| 80 | 80.5 | 79.9 | 79.3 | 78.7 | 78.1 | 77.5 | 76.9 | 76.3 | 75.6 | 75.0 | 74.4 | 73.8 | 73.1 | 72.5 | 71.8 | 71.2 | 70.5 | 69.9 | 69.2 |
| 85 | 47.7 | 46.6 | 45.5 | 44.4 | 43.4 | 42.4 | 41.4 | 40.5 | 39.7 | 38.8 | 38.1 | 37.3 | 36.6 | 35.9 | 35.3 | 34.7 | 34.1 | 33.6 | 33.1 |
| 90 | 16.3 | 15.6 | 14.9 | 14.3 | 13.6 | 13.0 | 12.3 | 11.7 | 11.1 | 10.6 | 10.00 | 9.46 | 8.93 | 8.43 | 7.94 | 7.47 | 7.02 | 6.58 | 6.16 |
| 95 | 181 | 173 | 166 | 159 | 152 | 146 | 139 | 132 | 126 | 120 | 114 | 108 | 102 | 96.5 | 91.0 | 85.6 | 80.4 | 75.3 | 70.3 |
| 100 | 392 | 374 | 357 | 340 | 324 | 309 | 294 | 280 | 266 | 252 | 240 | 228 | 216 | 205 | 194 | 185 | 175 | 166 | 158 |
| 105 | 587 | 561 | 536 | 512 | 489 | 467 | 445 | 425 | 405 | 387 | 369 | 352 | 336 | 321 | 307 | 293 | 281 | 269 | 259 |
| 110 | 749 | 719 | 690 | 663 | 636 | 611 | 586 | 563 | 540 | 519 | 498 | 479 | 461 | 443 | 427 | 412 | 398 | 384 | 372 |
| 115 | 864 | 832 | 802 | 773 | 746 | 719 | 693 | 668 | 645 | 623 | 601 | 581 | 562 | 544 | 527 | 511 | 496 | 483 | 470 |
| 120 | 913 | 884 | 855 | 828 | 801 | 776 | 752 | 729 | 707 | 685 | 665 | 646 | 628 | 612 | 596 | 581 | 567 | 554 | 543 |
| 125 | 900 | 874 | 849 | 826 | 803 | 781 | 760 | 740 | 721 | 703 | 686 | 670 | 654 | 640 | 627 | 614 | 602 | 592 | 582 |
| 130 | 886 | 863 | 841 | 820 | 800 | 780 | 762 | 744 | 727 | 711 | 696 | 681 | 668 | 655 | 643 | 632 | 622 | 612 | 604 |
| 135 | 878 | 859 | 841 | 824 | 807 | 791 | 775 | 761 | 746 | 733 | 720 | 708 | 696 | 685 | 675 | 665 | 656 | 648 | 640 |
| 140 | 863 | 848 | 834 | 820 | 806 | 794 | 781 | 769 | 758 | 747 | 736 | 726 | 717 | 708 | 699 | 691 | 684 | 676 | 670 |
| 145 | 841 | 830 | 818 | 807 | 797 | 787 | 777 | 767 | 758 | 749 | 741 | 733 | 725 | 718 | 711 | 704 | 698 | 692 | 686 |
| 150 | 798 | 790 | 783 | 775 | 768 | 761 | 754 | 747 | 741 | 734 | 728 | 723 | 717 | 712 | 707 | 702 | 698 | 693 | 689 |
| 155 | 781 | 774 | 768 | 761 | 755 | 749 | 743 | 738 | 732 | 727 | 722 | 717 | 713 | 708 | 704 | 700 | 696 | 693 | 689 |
| 160 | 789 | 784 | 779 | 774 | 769 | 764 | 760 | 755 | 751 | 747 | 743 | 739 | 735 | 731 | 728 | 724 | 721 | 718 | 715 |
| 165 | 783 | 780 | 777 | 773 | 770 | 767 | 764 | 761 | 758 | 755 | 752 | 750 | 747 | 744 | 742 | 739 | 737 | 735 | 732 |
| 170 | 769 | 767 | 765 | 763 | 761 | 759 | 757 | 756 | 754 | 752 | 750 | 749 | 747 | 745 | 744 | 742 | 741 | 739 | 738 |
| 175 | 741 | 740 | 739 | 739 | 738 | 737 | 737 | 736 | 735 | 735 | 734 | 734 | 733 | 732 | 732 | 731 | 731 | 730 | 730 |
| 180 | 716 | 716 | 716 | 716 | 716 | 716 | 716 | 716 | 716 | 716 | 716 | 716 | 716 | 716 | 716 | 716 | 716 | 716 | 716 |

C Range: 0 - 360DEG
C Interval: 5.0DEG
Test Speed: MEDIUM
Temperature:25.3DEG
Operators:
Test Date:2026-01-17

γ Range: 0 - 180DEG
γ Interval: 0.5DEG
Test System:EVERFINE GO-2000_V1 SYSTEM V2.0.406.10
Humidity:65.0%
Test Distance:11.700m [K=0.8547]
Remarks:

LUMINOUS DISTRIBUTION INTENSITY DATA

| | | |
|--|------------------|------------------|
| Test:U:229.71V I:0.1760A P:39.270W PF:0.9715 Freq:49.99Hz Lamp Flux:5056.02x1 lm | | |
| NAME: | TYPE: | WEIGHT: |
| SPEC.: | DIM.: 600*203*10 | SERIAL No.: |
| MFR.: | SUR.:0.58*0.122 | Shielding Angle: |

Table--2

UNIT: cd

| C(DEG) γ (DEG) | 95 | 100 | 105 | 110 | 115 | 120 | 125 | 130 | 135 | 140 | 145 | 150 | 155 | 160 | 165 | 170 | 175 | 180 | 185 |
|-------------------|------|------|------|------|------|------|------|------|------|------|------|------|------|------|------|------|------|------|------|
| 0 | 946 | 946 | 946 | 946 | 946 | 946 | 946 | 946 | 946 | 946 | 946 | 946 | 946 | 946 | 946 | 946 | 946 | 946 | 946 |
| 5 | 941 | 939 | 937 | 934 | 932 | 930 | 928 | 926 | 925 | 923 | 921 | 920 | 919 | 917 | 916 | 916 | 915 | 914 | 915 |
| 10 | 930 | 926 | 922 | 918 | 914 | 911 | 907 | 904 | 901 | 898 | 895 | 893 | 890 | 888 | 887 | 885 | 884 | 883 | 884 |
| 15 | 909 | 904 | 898 | 893 | 888 | 883 | 878 | 874 | 870 | 866 | 863 | 860 | 857 | 854 | 852 | 851 | 849 | 848 | 849 |
| 20 | 874 | 867 | 860 | 854 | 848 | 842 | 837 | 832 | 827 | 823 | 819 | 815 | 812 | 809 | 807 | 805 | 804 | 803 | 804 |
| 25 | 820 | 812 | 805 | 798 | 792 | 785 | 780 | 774 | 769 | 765 | 760 | 757 | 753 | 751 | 748 | 746 | 745 | 744 | 745 |
| 30 | 750 | 742 | 735 | 728 | 722 | 715 | 710 | 704 | 699 | 694 | 690 | 686 | 683 | 680 | 677 | 676 | 674 | 673 | 674 |
| 35 | 666 | 659 | 652 | 646 | 639 | 633 | 628 | 623 | 618 | 613 | 609 | 606 | 602 | 599 | 597 | 595 | 594 | 593 | 594 |
| 40 | 555 | 548 | 542 | 535 | 529 | 523 | 517 | 512 | 507 | 503 | 499 | 495 | 491 | 488 | 486 | 484 | 482 | 481 | 482 |
| 45 | 409 | 404 | 400 | 396 | 391 | 388 | 384 | 381 | 378 | 375 | 373 | 371 | 369 | 368 | 367 | 366 | 366 | 366 | 367 |
| 50 | 276 | 276 | 276 | 276 | 277 | 278 | 280 | 282 | 284 | 286 | 288 | 291 | 293 | 296 | 298 | 301 | 303 | 306 | 304 |
| 55 | 223 | 222 | 221 | 220 | 220 | 220 | 221 | 221 | 222 | 223 | 224 | 225 | 226 | 227 | 228 | 229 | 230 | 231 | 230 |
| 60 | 191 | 188 | 185 | 183 | 180 | 177 | 174 | 171 | 169 | 166 | 164 | 162 | 159 | 158 | 156 | 154 | 153 | 152 | 153 |
| 65 | 148 | 145 | 142 | 140 | 137 | 134 | 131 | 128 | 125 | 122 | 120 | 117 | 115 | 113 | 111 | 109 | 107 | 106 | 108 |
| 70 | 102 | 101 | 101 | 100 | 99.4 | 98.7 | 98.1 | 97.6 | 97.0 | 96.5 | 96.1 | 95.7 | 95.3 | 95.0 | 94.8 | 94.7 | 94.6 | 94.6 | 95.4 |
| 75 | 79.3 | 79.3 | 79.5 | 79.7 | 80.0 | 80.3 | 80.7 | 81.2 | 81.7 | 82.2 | 82.7 | 83.3 | 83.8 | 84.4 | 84.9 | 85.4 | 85.9 | 86.4 | 85.8 |
| 80 | 68.3 | 67.4 | 66.6 | 65.7 | 64.8 | 64.0 | 63.2 | 62.4 | 61.6 | 60.9 | 60.2 | 59.5 | 58.9 | 58.3 | 57.8 | 57.3 | 56.9 | 56.6 | 56.7 |
| 85 | 32.7 | 32.4 | 32.1 | 31.8 | 31.5 | 31.3 | 31.1 | 31.0 | 30.8 | 30.8 | 30.7 | 30.7 | 30.7 | 30.8 | 30.8 | 30.9 | 31.1 | 31.2 | 31.5 |
| 90 | 5.70 | 5.26 | 4.84 | 4.44 | 4.06 | 3.70 | 3.37 | 3.06 | 2.78 | 2.52 | 2.29 | 2.10 | 1.93 | 1.79 | 1.68 | 1.61 | 1.57 | 1.56 | 1.76 |
| 95 | 64.7 | 59.3 | 54.0 | 48.9 | 44.0 | 39.3 | 34.9 | 30.6 | 26.7 | 23.0 | 19.5 | 16.4 | 13.6 | 11.1 | 8.95 | 7.15 | 5.71 | 4.66 | 5.47 |
| 100 | 151 | 145 | 139 | 133 | 129 | 124 | 120 | 117 | 114 | 111 | 109 | 107 | 106 | 105 | 104 | 104 | 104 | 105 | 104 |
| 105 | 251 | 244 | 238 | 233 | 228 | 224 | 221 | 219 | 217 | 215 | 214 | 214 | 214 | 214 | 215 | 216 | 218 | 219 | 217 |
| 110 | 364 | 356 | 349 | 343 | 338 | 334 | 330 | 328 | 326 | 324 | 323 | 323 | 323 | 324 | 325 | 326 | 328 | 330 | 327 |
| 115 | 461 | 454 | 447 | 441 | 436 | 432 | 429 | 427 | 425 | 424 | 423 | 423 | 424 | 425 | 426 | 427 | 429 | 432 | 428 |
| 120 | 535 | 528 | 522 | 517 | 512 | 509 | 506 | 504 | 503 | 502 | 502 | 502 | 503 | 504 | 505 | 507 | 509 | 511 | 508 |
| 125 | 576 | 571 | 566 | 562 | 559 | 557 | 555 | 554 | 554 | 554 | 554 | 555 | 556 | 558 | 560 | 562 | 564 | 566 | 563 |
| 130 | 598 | 594 | 590 | 587 | 585 | 583 | 581 | 581 | 580 | 581 | 581 | 582 | 583 | 585 | 586 | 588 | 590 | 592 | 589 |
| 135 | 635 | 630 | 625 | 622 | 618 | 616 | 613 | 611 | 610 | 609 | 608 | 608 | 608 | 608 | 609 | 610 | 611 | 612 | 610 |
| 140 | 664 | 660 | 655 | 651 | 648 | 645 | 642 | 639 | 637 | 636 | 634 | 633 | 633 | 632 | 632 | 632 | 632 | 633 | 631 |
| 145 | 682 | 677 | 673 | 670 | 666 | 663 | 660 | 658 | 656 | 654 | 652 | 651 | 650 | 649 | 649 | 648 | 648 | 648 | 648 |
| 150 | 685 | 682 | 678 | 675 | 672 | 670 | 667 | 665 | 663 | 661 | 660 | 658 | 657 | 656 | 655 | 655 | 654 | 654 | 654 |
| 155 | 686 | 683 | 680 | 677 | 675 | 672 | 670 | 668 | 667 | 665 | 664 | 662 | 661 | 660 | 660 | 659 | 659 | 659 | 658 |
| 160 | 712 | 709 | 706 | 703 | 701 | 698 | 696 | 694 | 692 | 690 | 689 | 687 | 686 | 685 | 684 | 683 | 683 | 682 | 682 |
| 165 | 730 | 728 | 725 | 723 | 721 | 719 | 717 | 715 | 713 | 712 | 710 | 709 | 708 | 706 | 705 | 705 | 704 | 704 | 704 |
| 170 | 736 | 734 | 733 | 731 | 730 | 728 | 727 | 726 | 724 | 723 | 722 | 721 | 720 | 720 | 719 | 718 | 718 | 717 | 718 |
| 175 | 729 | 729 | 728 | 727 | 727 | 726 | 726 | 725 | 725 | 724 | 724 | 724 | 723 | 723 | 723 | 723 | 722 | 722 | 722 |
| 180 | 716 | 716 | 716 | 716 | 716 | 716 | 716 | 716 | 716 | 716 | 716 | 716 | 716 | 716 | 716 | 716 | 716 | 716 | 716 |

C Range: 0 - 360DEG
C Interval: 5.0DEG
Test Speed: MEDIUM
Temperature:25.3DEG
Operators:
Test Date:2026-01-17

γ Range: 0 - 180DEG
γ Interval: 0.5DEG
Test System:EVERFINE GO-2000_V1 SYSTEM V2.0.406.10
Humidity:65.0%
Test Distance:11.700m [K=0.8547]
Remarks:

LUMINOUS DISTRIBUTION INTENSITY DATA

| | | |
|--|------------------|------------------|
| Test:U:229.71V I:0.1760A P:39.270W PF:0.9715 Freq:49.99Hz Lamp Flux:5056.02x1 lm | | |
| NAME: | TYPE: | WEIGHT: |
| SPEC.: | DIM.: 600*203*10 | SERIAL No.: |
| MFR.: | SUR.:0.58*0.122 | Shielding Angle: |

Table--3

UNIT: cd

| C(DEG) γ (DEG) | 190 | 195 | 200 | 205 | 210 | 215 | 220 | 225 | 230 | 235 | 240 | 245 | 250 | 255 | 260 | 265 | 270 | 275 | 280 |
|-------------------|------|------|------|------|------|------|------|------|------|------|------|------|------|------|------|------|------|------|------|
| 0 | 946 | 946 | 946 | 946 | 946 | 946 | 946 | 946 | 946 | 946 | 946 | 946 | 946 | 946 | 946 | 946 | 946 | 946 | 946 |
| 5 | 915 | 916 | 917 | 918 | 920 | 921 | 922 | 924 | 926 | 928 | 929 | 931 | 933 | 936 | 938 | 940 | 942 | 944 | 946 |
| 10 | 885 | 886 | 888 | 890 | 892 | 894 | 897 | 900 | 903 | 906 | 909 | 913 | 917 | 921 | 925 | 929 | 933 | 937 | 940 |
| 15 | 851 | 852 | 854 | 857 | 859 | 863 | 866 | 870 | 874 | 878 | 882 | 887 | 892 | 898 | 903 | 909 | 915 | 920 | 926 |
| 20 | 806 | 807 | 810 | 813 | 816 | 819 | 823 | 828 | 833 | 838 | 843 | 849 | 855 | 861 | 868 | 875 | 882 | 889 | 896 |
| 25 | 747 | 749 | 751 | 754 | 758 | 762 | 766 | 771 | 776 | 782 | 788 | 794 | 800 | 807 | 815 | 822 | 830 | 838 | 845 |
| 30 | 676 | 678 | 681 | 684 | 687 | 691 | 696 | 700 | 706 | 711 | 717 | 724 | 730 | 737 | 744 | 752 | 760 | 767 | 775 |
| 35 | 595 | 597 | 600 | 603 | 606 | 610 | 614 | 619 | 624 | 629 | 635 | 640 | 647 | 653 | 660 | 667 | 674 | 681 | 688 |
| 40 | 483 | 485 | 487 | 489 | 492 | 496 | 500 | 504 | 509 | 513 | 519 | 524 | 530 | 537 | 543 | 550 | 557 | 564 | 571 |
| 45 | 369 | 371 | 373 | 376 | 379 | 382 | 386 | 389 | 393 | 398 | 402 | 407 | 412 | 417 | 422 | 427 | 433 | 437 | 442 |
| 50 | 302 | 300 | 298 | 297 | 295 | 293 | 291 | 289 | 288 | 287 | 286 | 285 | 285 | 284 | 285 | 285 | 286 | 290 | 294 |
| 55 | 228 | 227 | 225 | 224 | 222 | 221 | 220 | 219 | 218 | 217 | 217 | 216 | 216 | 216 | 217 | 218 | 219 | 222 | 225 |
| 60 | 154 | 156 | 158 | 159 | 162 | 164 | 166 | 169 | 171 | 174 | 177 | 180 | 182 | 185 | 188 | 191 | 194 | 196 | 198 |
| 65 | 110 | 113 | 116 | 119 | 122 | 125 | 129 | 132 | 136 | 139 | 143 | 146 | 150 | 153 | 156 | 159 | 161 | 162 | 163 |
| 70 | 96.2 | 97.1 | 98.1 | 99.1 | 100 | 101 | 102 | 104 | 105 | 106 | 107 | 108 | 109 | 110 | 111 | 112 | 113 | 114 | 114 |
| 75 | 85.2 | 84.6 | 83.9 | 83.3 | 82.6 | 81.9 | 81.3 | 80.7 | 80.1 | 79.6 | 79.1 | 78.6 | 78.3 | 78.0 | 77.8 | 77.7 | 77.7 | 78.4 | 79.1 |
| 80 | 56.8 | 57.0 | 57.3 | 57.6 | 58.0 | 58.4 | 58.9 | 59.4 | 60.0 | 60.6 | 61.3 | 61.9 | 62.6 | 63.4 | 64.1 | 64.9 | 65.7 | 66.4 | 67.1 |
| 85 | 31.7 | 32.0 | 32.3 | 32.6 | 32.9 | 33.3 | 33.7 | 34.1 | 34.5 | 34.9 | 35.4 | 35.8 | 36.3 | 36.8 | 37.3 | 37.8 | 38.3 | 38.8 | 39.2 |
| 90 | 1.98 | 2.24 | 2.53 | 2.85 | 3.19 | 3.56 | 3.96 | 4.37 | 4.80 | 5.25 | 5.71 | 6.19 | 6.68 | 7.17 | 7.68 | 8.19 | 8.70 | 9.11 | 9.53 |
| 95 | 6.66 | 8.23 | 10.1 | 12.4 | 15.0 | 17.9 | 21.1 | 24.6 | 28.4 | 32.4 | 36.7 | 41.3 | 46.0 | 51.0 | 56.1 | 61.5 | 67.0 | 72.0 | 77.1 |
| 100 | 103 | 103 | 103 | 103 | 104 | 106 | 107 | 110 | 112 | 115 | 119 | 123 | 127 | 133 | 138 | 145 | 151 | 160 | 169 |
| 105 | 215 | 213 | 212 | 211 | 210 | 210 | 210 | 211 | 213 | 215 | 218 | 221 | 225 | 230 | 236 | 243 | 250 | 261 | 273 |
| 110 | 324 | 322 | 320 | 318 | 317 | 317 | 317 | 317 | 319 | 321 | 324 | 327 | 332 | 337 | 343 | 351 | 359 | 371 | 385 |
| 115 | 425 | 422 | 420 | 418 | 416 | 415 | 415 | 415 | 416 | 418 | 420 | 423 | 428 | 433 | 439 | 446 | 455 | 467 | 481 |
| 120 | 504 | 502 | 499 | 497 | 495 | 494 | 493 | 493 | 493 | 494 | 496 | 499 | 502 | 507 | 512 | 519 | 526 | 538 | 551 |
| 125 | 560 | 557 | 554 | 552 | 550 | 548 | 547 | 546 | 546 | 546 | 547 | 548 | 551 | 554 | 558 | 563 | 569 | 579 | 590 |
| 130 | 586 | 584 | 581 | 579 | 577 | 575 | 574 | 573 | 573 | 573 | 573 | 575 | 577 | 579 | 583 | 587 | 592 | 601 | 610 |
| 135 | 608 | 607 | 605 | 604 | 604 | 603 | 603 | 604 | 605 | 606 | 608 | 610 | 613 | 616 | 620 | 625 | 630 | 638 | 647 |
| 140 | 630 | 630 | 629 | 629 | 629 | 630 | 630 | 631 | 633 | 635 | 637 | 640 | 643 | 646 | 650 | 655 | 660 | 667 | 674 |
| 145 | 647 | 647 | 647 | 647 | 648 | 648 | 649 | 651 | 652 | 654 | 657 | 659 | 662 | 666 | 669 | 674 | 678 | 684 | 690 |
| 150 | 654 | 654 | 654 | 655 | 655 | 656 | 657 | 659 | 661 | 662 | 665 | 667 | 669 | 672 | 675 | 679 | 683 | 687 | 691 |
| 155 | 658 | 659 | 659 | 659 | 660 | 661 | 662 | 663 | 665 | 666 | 668 | 670 | 673 | 675 | 678 | 681 | 684 | 687 | 691 |
| 160 | 683 | 683 | 684 | 685 | 686 | 687 | 688 | 690 | 691 | 693 | 695 | 697 | 700 | 702 | 705 | 708 | 711 | 714 | 717 |
| 165 | 704 | 705 | 705 | 706 | 707 | 708 | 710 | 711 | 713 | 714 | 716 | 718 | 720 | 722 | 724 | 727 | 729 | 731 | 734 |
| 170 | 718 | 718 | 719 | 719 | 720 | 721 | 722 | 723 | 724 | 725 | 726 | 728 | 729 | 731 | 732 | 734 | 735 | 737 | 738 |
| 175 | 722 | 722 | 723 | 723 | 723 | 723 | 724 | 724 | 724 | 725 | 725 | 726 | 726 | 727 | 727 | 728 | 728 | 729 | 729 |
| 180 | 716 | 716 | 716 | 716 | 716 | 716 | 716 | 716 | 716 | 716 | 716 | 716 | 716 | 716 | 716 | 716 | 716 | 716 | 716 |

C Range: 0 - 360DEG
C Interval: 5.0DEG
Test Speed: MEDIUM
Temperature:25.3DEG
Operators:
Test Date:2026-01-17

γ Range: 0 - 180DEG
γ Interval: 0.5DEG
Test System:EVERFINE GO-2000_V1 SYSTEM V2.0.406.10
Humidity:65.0%
Test Distance:11.700m [K=0.8547]
Remarks:

LUMINOUS DISTRIBUTION INTENSITY DATA

| | | | | | | | | | | | | | | | | | |
|--|--|--|--|--|--|--|--|--|------------------|--|--|--|--|--|------------------|--|--|
| Test:U:229.71V I:0.1760A P:39.270W PF:0.9715 Freq:49.99Hz Lamp Flux:5056.02x1 lm | | | | | | | | | | | | | | | | | |
| NAME: | | | | | | | | | TYPE: | | | | | | WEIGHT: | | |
| SPEC.: | | | | | | | | | DIM.: 600*203*10 | | | | | | SERIAL No.: | | |
| MFR.: | | | | | | | | | SUR.:0.58*0.122 | | | | | | Shielding Angle: | | |

Table--4

UNIT: cd

| C(DEG) γ (DEG) | 285 | 290 | 295 | 300 | 305 | 310 | 315 | 320 | 325 | 330 | 335 | 340 | 345 | 350 | 355 | | | | |
|-------------------|------|------|------|------|------|------|------|------|------|------|------|------|------|------|------|--|--|--|--|
| 0 | 946 | 946 | 946 | 946 | 946 | 946 | 946 | 946 | 946 | 946 | 946 | 946 | 946 | 946 | 946 | | | | |
| 5 | 948 | 950 | 952 | 954 | 956 | 958 | 960 | 962 | 964 | 967 | 969 | 971 | 974 | 976 | 978 | | | | |
| 10 | 944 | 948 | 952 | 956 | 961 | 965 | 969 | 974 | 979 | 983 | 988 | 993 | 998 | 1003 | 1009 | | | | |
| 15 | 931 | 937 | 943 | 950 | 956 | 963 | 970 | 977 | 984 | 991 | 999 | 1006 | 1014 | 1022 | 1030 | | | | |
| 20 | 903 | 911 | 918 | 926 | 934 | 943 | 952 | 961 | 970 | 979 | 989 | 999 | 1009 | 1019 | 1030 | | | | |
| 25 | 853 | 862 | 870 | 879 | 888 | 897 | 907 | 917 | 927 | 938 | 948 | 959 | 971 | 982 | 994 | | | | |
| 30 | 783 | 791 | 799 | 808 | 817 | 826 | 836 | 845 | 855 | 866 | 876 | 887 | 898 | 909 | 921 | | | | |
| 35 | 695 | 703 | 710 | 718 | 726 | 735 | 743 | 752 | 761 | 771 | 780 | 790 | 800 | 810 | 821 | | | | |
| 40 | 578 | 585 | 593 | 601 | 609 | 618 | 626 | 636 | 645 | 654 | 664 | 674 | 684 | 695 | 706 | | | | |
| 45 | 448 | 453 | 458 | 464 | 470 | 475 | 481 | 487 | 494 | 500 | 506 | 513 | 520 | 527 | 534 | | | | |
| 50 | 298 | 303 | 308 | 314 | 320 | 327 | 334 | 341 | 350 | 358 | 367 | 377 | 387 | 397 | 408 | | | | |
| 55 | 229 | 233 | 238 | 243 | 248 | 254 | 260 | 266 | 273 | 280 | 288 | 296 | 304 | 313 | 322 | | | | |
| 60 | 199 | 201 | 203 | 205 | 206 | 208 | 209 | 211 | 212 | 213 | 215 | 216 | 217 | 218 | 220 | | | | |
| 65 | 163 | 163 | 163 | 163 | 162 | 161 | 160 | 158 | 157 | 155 | 153 | 150 | 148 | 145 | 142 | | | | |
| 70 | 114 | 115 | 115 | 115 | 115 | 115 | 115 | 115 | 114 | 114 | 114 | 113 | 113 | 112 | 112 | | | | |
| 75 | 79.9 | 80.9 | 82.0 | 83.2 | 84.5 | 85.9 | 87.5 | 89.1 | 90.9 | 92.8 | 94.8 | 96.9 | 99.1 | 101 | 104 | | | | |
| 80 | 67.8 | 68.5 | 69.3 | 70.0 | 70.8 | 71.6 | 72.4 | 73.3 | 74.1 | 75.0 | 75.9 | 76.8 | 77.7 | 78.6 | 79.6 | | | | |
| 85 | 39.7 | 40.2 | 40.7 | 41.2 | 41.7 | 42.2 | 42.7 | 43.2 | 43.8 | 44.3 | 44.9 | 45.4 | 46.0 | 46.5 | 47.1 | | | | |
| 90 | 9.94 | 10.4 | 10.8 | 11.2 | 11.6 | 12.0 | 12.5 | 12.9 | 13.3 | 13.7 | 14.2 | 14.6 | 15.0 | 15.5 | 15.9 | | | | |
| 95 | 82.4 | 87.8 | 93.4 | 99.2 | 105 | 111 | 117 | 124 | 130 | 137 | 144 | 151 | 158 | 166 | 173 | | | | |
| 100 | 178 | 188 | 199 | 210 | 222 | 234 | 247 | 261 | 275 | 290 | 306 | 322 | 338 | 356 | 373 | | | | |
| 105 | 285 | 299 | 313 | 329 | 345 | 362 | 380 | 400 | 420 | 441 | 463 | 486 | 510 | 534 | 560 | | | | |
| 110 | 399 | 415 | 431 | 449 | 468 | 488 | 509 | 531 | 554 | 579 | 604 | 631 | 659 | 688 | 718 | | | | |
| 115 | 496 | 512 | 530 | 548 | 568 | 589 | 611 | 634 | 659 | 684 | 711 | 739 | 769 | 799 | 831 | | | | |
| 120 | 565 | 580 | 597 | 614 | 633 | 652 | 673 | 695 | 719 | 743 | 768 | 795 | 823 | 852 | 882 | | | | |
| 125 | 601 | 614 | 628 | 643 | 659 | 676 | 693 | 712 | 732 | 753 | 775 | 798 | 822 | 847 | 873 | | | | |
| 130 | 621 | 632 | 644 | 657 | 671 | 686 | 702 | 719 | 737 | 755 | 775 | 795 | 816 | 839 | 862 | | | | |
| 135 | 656 | 666 | 676 | 687 | 699 | 712 | 725 | 740 | 754 | 770 | 786 | 803 | 821 | 839 | 858 | | | | |
| 140 | 682 | 690 | 699 | 708 | 718 | 729 | 739 | 751 | 763 | 776 | 789 | 803 | 817 | 832 | 847 | | | | |
| 145 | 696 | 703 | 710 | 718 | 726 | 734 | 743 | 752 | 762 | 772 | 783 | 794 | 805 | 817 | 829 | | | | |
| 150 | 696 | 701 | 706 | 711 | 717 | 723 | 730 | 736 | 743 | 750 | 757 | 765 | 773 | 781 | 790 | | | | |
| 155 | 695 | 699 | 703 | 708 | 713 | 718 | 723 | 729 | 734 | 740 | 747 | 753 | 760 | 766 | 773 | | | | |
| 160 | 720 | 724 | 727 | 731 | 735 | 739 | 744 | 748 | 753 | 757 | 762 | 767 | 773 | 778 | 784 | | | | |
| 165 | 736 | 739 | 741 | 744 | 747 | 750 | 753 | 756 | 759 | 762 | 765 | 769 | 772 | 776 | 780 | | | | |
| 170 | 740 | 741 | 743 | 745 | 746 | 748 | 750 | 752 | 754 | 756 | 758 | 760 | 762 | 765 | 767 | | | | |
| 175 | 730 | 730 | 731 | 732 | 732 | 733 | 734 | 734 | 735 | 736 | 737 | 737 | 738 | 739 | 740 | | | | |
| 180 | 716 | 716 | 716 | 716 | 716 | 716 | 716 | 716 | 716 | 716 | 716 | 716 | 716 | 716 | 716 | | | | |

C Range: 0 - 360DEG
C Interval: 5.0DEG
Test Speed: MEDIUM
Temperature:25.3DEG
Operators:
Test Date:2026-01-17

γ Range: 0 - 180DEG
γ Interval: 0.5DEG
Test System:EVERFINE GO-2000_V1 SYSTEM V2.0.406.10
Humidity:65.0%
Test Distance:11.700m [K=0.8547]
Remarks: